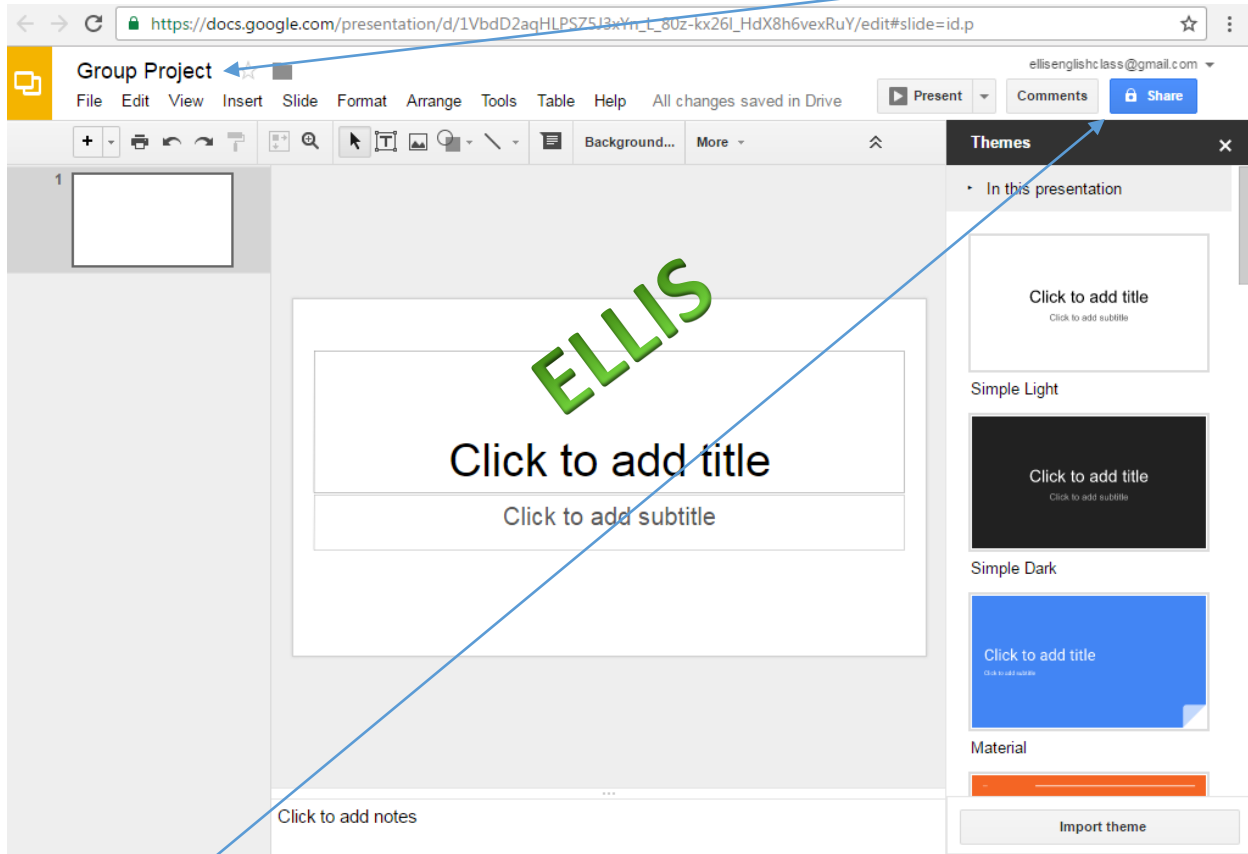


Sync Student Gmail Accounts utilizing Google Slides for Group Presentations

Select one peer to launch Google Slides by creating a new document and labeling it.



Click on *Share*. The *Share with Others* screen will be displayed. Insert email addresses via peers, and ensure the *Can Edit* is selected. In addition, the shareable link is optional. Click on it for reference.

